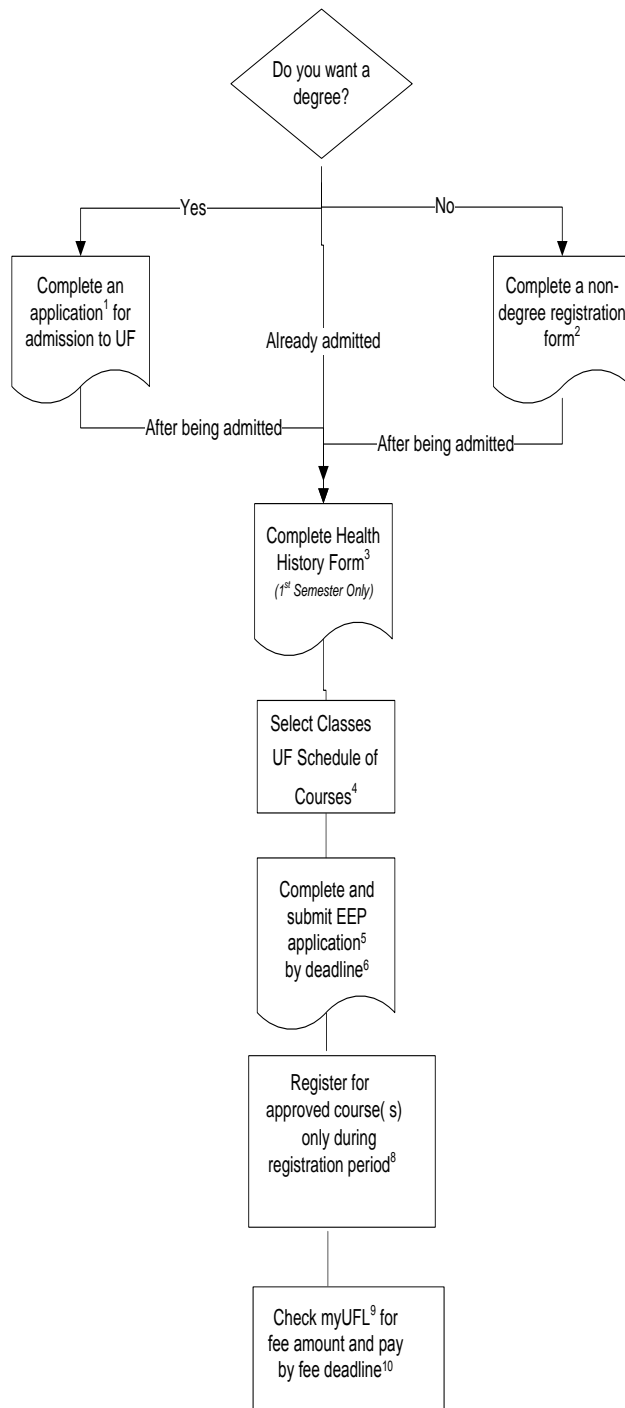


# Employee Education Program: UF

<http://hr.ufl.edu/learnandgrow/education-programs/employee-education-program/>



1-Application for Admission to UF  
<http://admissions.ufl.edu/>

Deadlines to Apply for UF  
<http://admissions.ufl.edu/>  
Apply [degree option] → Dates/Deadlines

2-Non-degree Registration Form  
<https://student.ufl.edu/cgi-bin/eaglec?MDASTRAN=nda-intro2>

3-Mandatory Immunization and Health History Form  
<http://shcc.ufl.edu/>  
*\*\*First semester only*

4-UF Schedule of Courses  
<https://registrar.ufl.edu/soc/>  
*\*\*Only choose course/sections with a 'Y' in the EEP column*

5-Complete online EEP Application  
<http://hr.ufl.edu/learnandgrow/education-programs/employee-education-program/>

6-EEP Application Deadline  
<http://hr.ufl.edu/learnandgrow/education-programs/employee-education-program/uf-checklist/>

7-ONE.UF: Register for Classes  
<https://registrar.ufl.edu/registration/reghowto>  
*\*\*EEP will cover up to a maximum of 6 credits per semester*

8-Fees Due  
<http://my.ufl.edu>  
→ Main Menu > My Campus Finances > Make a Payment  
*\*\*EEP will waive in-state matriculation, building, capital improvement, student financial aid, technolog, activity and service, athletic, student health, and transportation fees up to 6 credit hours*  
*\*\*All other fees are the student's responsibility*  
*\*\*Questions about fees? Contact University Bursar (352) 392-9545*

9-Payment Methods  
<http://www.fa.ufl.edu/bursar/>

10-Fee deadline  
<https://catalog.ufl.edu/ugrad/current/Pages/dates-and-deadlines.aspx>

Questions? Contact Kenya Williams  
352-273-1761 [kenya-williams@ufl.edu](mailto:kenya-williams@ufl.edu)